

MONTHLY MEMBERSHIP PROGRESS REPORT

District 16 L

Results as of: 2/29/2024

GMT:

LOCATION NEW JERSEY

GMT CA

Clubs			
RESULTS FOR 2023-2024			
QUARTER	NEW CLUB GOAL	NEW CLUBS	DROPPED CLUBS
JULY/AUG/SEPT	0	0	0
OCT/NOV/DEC	1	0	1
JAN/FEB/MAR	0	0	0
APR/MAY/JUNE	0	0	0

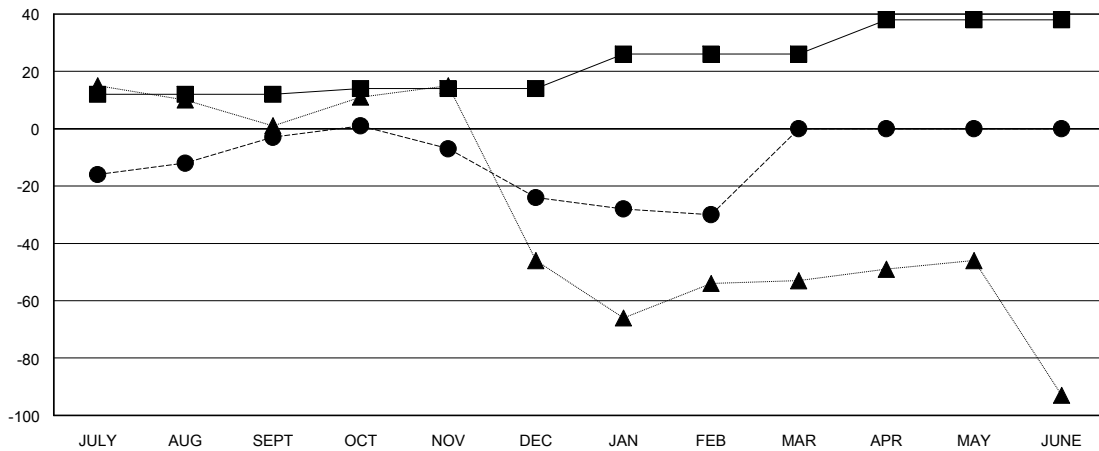
Members			
RESULTS FOR 2023-2024			
QUARTER	MEMBER GROWTH NET GOAL	MEMBER GROWTH ACTUAL	DROPPED MEMBERS ACTUAL (including transfers)
JULY/AUG/SEPT	12	45	40
OCT/NOV/DEC	2	35	45
JAN/FEB/MAR	12	10	15
APR/MAY/JUNE	12	0	0

GOALS AND ACTUAL NEW CLUBS CUMULATIVE



- - CURRENT YEAR GOALS FOR NEW CLUBS
- - CURRENT YEAR ACTUAL NEW CLUBS
- ▲ - LAST YEAR ACTUAL NEW CLUBS

GOALS AND ACTUAL MEMBERS CUMULATIVE



- - MEMBER GROWTH NET GOAL
- - MEMBER GROWTH ACTUAL
- ▲ - LAST YEAR MEMBERSHIP ACTUAL

DROPPED CLUBS: 1	23 CLUBS OF 50 ADDED 1 OR MORE NEW MEMBERS	GENDER DISTRIBUTION	
		MALE 831 (64.57%) FEMALE 453 (35.20%)	
DROPPED MEMBERS		CLICK HERE FOR CUMULATIVE MEMBERSHIP DATA	TOTAL FAMILY UNIT MEMBERS 223
DECEASED 12 CLUB CANCELLED 9 OTHER 79 TOTAL 100			FAMILY MEMBERS PAYING HALF DUES 117